

TAXING UNIT: 10

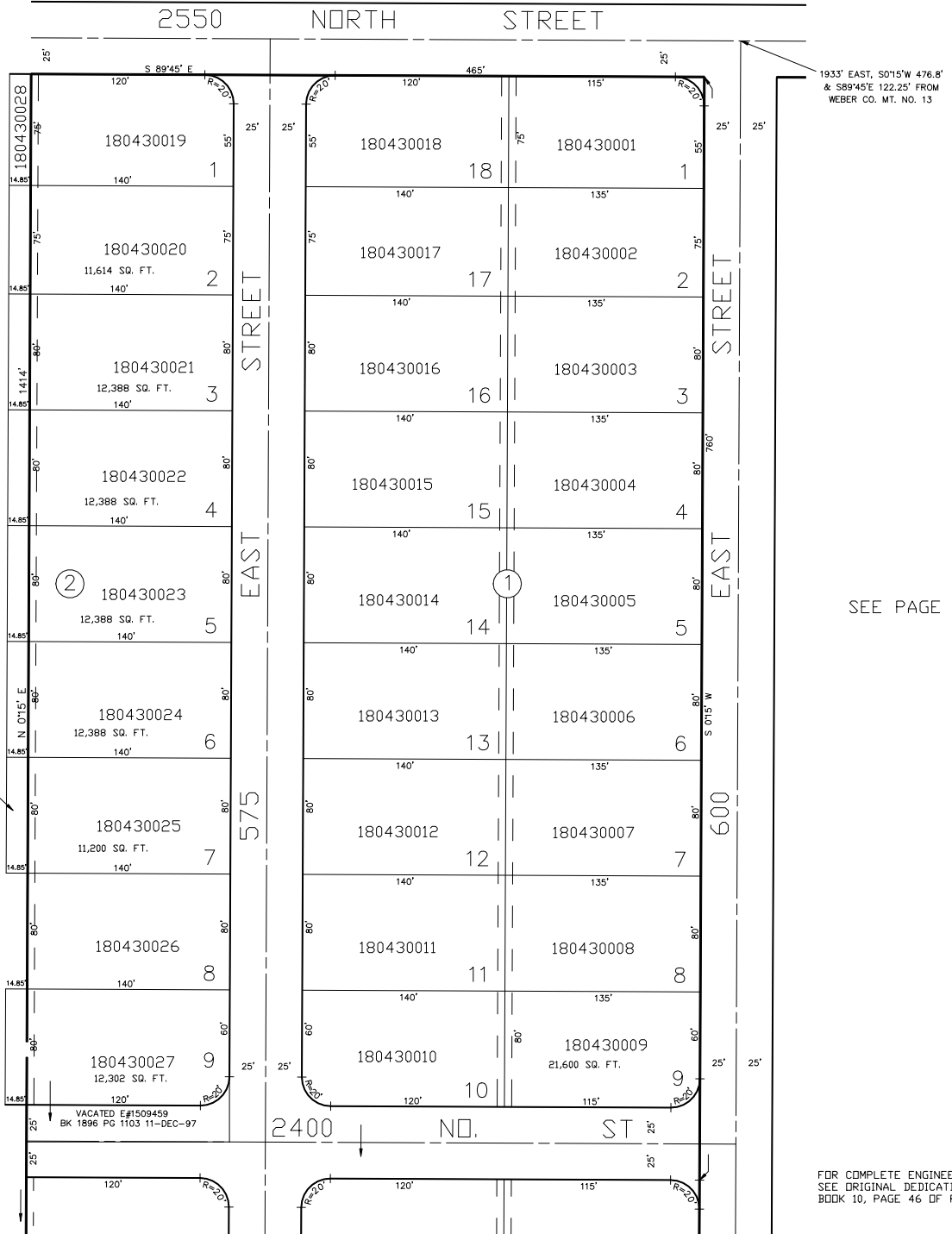
PART OF THE N.W. 1/4 OF SECTION 33, T.7N., R.1W., S.L.B. & M.
SIMMONS SUBDIVISION BLOCKS 1 & 2
IN NORTH OGDEN CITY
SCALE 1" = 50'

SEE PAGE 42

43

SEE PAGE 42

SEE PAGE 42



SEE PAGE 44